



LEAD-MOTION

**Focus on High Performance
Full Function Servo System**



R&D Center-Germany Chlehaus A, Fischertwiete 220395 Hamburg
R&D Center-Nanjing Room 2-205, Zhongnan Valley Innovation Park, No.59 West Tianyuan Road, Jiangning District, Nanjing City, Jiangsu Province
R&D Center-Changzhou Building 9, Wujin National Hi-tech Industrial Park, Changzhou City, Jiangsu Province
LEAD-MOTION-Headquarters : Building 9, Wujin National Hi-tech Industrial Park, Changzhou City, Jiangsu Province
Changzhou Lead-motion Intelligent Technology Co., Ltd



Helpline Sales 400-828-2257

Helpline Service 400-828-2267

www.lead-motion.com

LEAD-MOTION

Drive The Future Precisely



LEAD-MOTION

Company Profile

LEAD-MOTION is a high-tech innovative company specialized in Motion & Drive solutions, we are dedicated to be a worldwide market and technology leader in the field of high performance servo system, combining R&D, production, sales and service of standard and customized drive family to meet customer demands in a wide range of applications and industries including Machine tools, 3C, Packaging, Printing, Textile, Robot, Re-energy and Logistics. In order to serve china market more responsible and professional, Lead-Motion Asian center officially established in Changzhou, Jiangsu in 2017.

LEAD-MOTION take the spirit of "Drive the future precisely" and the concept of "Create the core competitive force for customers continuously" as our business philosophy, based on advanced control technology and comprehensive industry know-how, we develop new generation of servo system with a very high cost performance, deep customer oriented understanding and on time deliveries and services for OEMs all over the world.

R&D Center

Located in Hamburg, Germany



Chilehaus A, Fischertwiete 220095 Hamburg





Focus on high performance full function servo system



Size A-B



Size C-D

- 1 Fieldbus Interface: EtherCAT
- 2 mini USB
- 3 6x7 - Segment Display
- 4 Operating Button
- 5 I/O Terminals
- 6 Encoder interface
- 7 CHARGE Indicator
- 8 Connection AC Mains; Connection Motor; Connection Braking Resistor

- 1 Fieldbus Interface: EtherCAT
- 2 mini USB
- 3 6x7 - Segment Display
- 4 Operating Button
- 5 I/O Terminals
- 6 Encoder interface
- 7 CHARGE Indicator
- 8 Connection AC Mains; Connection Motor; Connection Braking Resistor
- 9 Connection Safety Terminal
- 10 Connection PE-Conductor

Order Code

M1-04BM

Product Series

M1	M1 Series
----	-----------

Control mode

M	Pulse
A	Pulse/Analog
E	EtherCAT
P	PROFINET
C	CANopen
R	RS485

Rated Power

02	200W
04	400W
08	750W
10	1kW
15	1.5kW
20	2kW
30	3kW
45	4.5kW
55	5.5kW
75	7.5kW

Supply Voltage

B	220V
C	380V



M1 Series High Performance Servo System

Supply Voltage 1 × 220V/3 × 220V

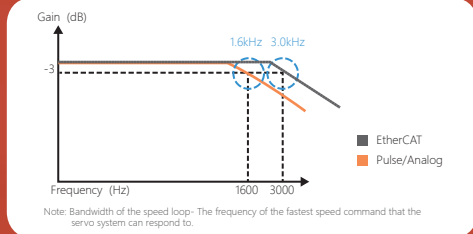
Type	Frame size	Rated current(effective)	Peak current(effective)	Technical Data
M1-01BX	SizeA	1.1A	3.3A	on page 11
M1-02BX	SizeA	1.6A	5.8A	on page 11
M1-04BX	SizeA	2.8A	9.3A	on page 11
M1-08BX	SizeA	5.5A	16.9A	on page 11
M1-10BX	SizeB	7.6A	17.0A	on page 12
M1-15BX	SizeB	12A	28.0A	on page 12
M1-20BX	SizeC	18.5A	42.0A	on page 13
M1-30BX	SizeC	19.6A	56.0A	on page 13

Supply Voltage 3 × 380V

Type	Frame size	Rated current(effective)	Peak current(effective)	Technical Data
M1-30CX	SizeC	12A	28.0A	on page 14
M1-45CX	SizeD	16.5A	42.0A	on page 15
M1-55CX	SizeD	21A	55.0A	on page 15
M1-75CX	SizeD	26A	65.0A	on page 15

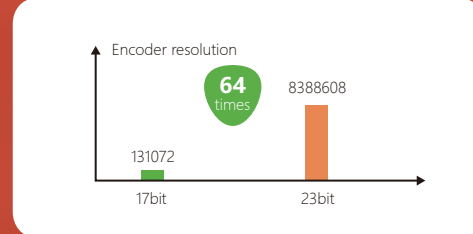
High Performance

Full Function



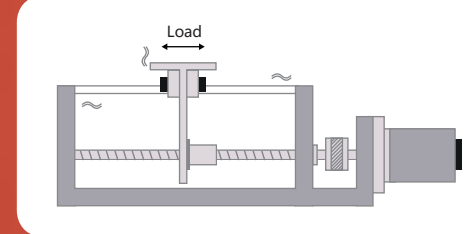
High response 3.0kHz

M1 series high performance servocontroller give full play to the performance of mechanical equipment thanks to its special algorithms of current loop which improve speed loop bandwidth, save tuning time effectively.



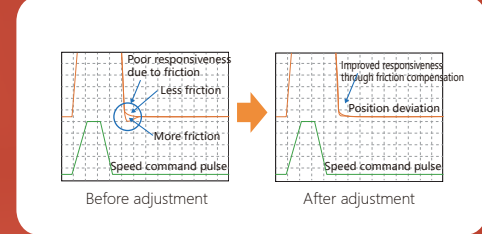
High precision 8388608P/R

High precision positioning and speed stability are realized by the application of high resolution encoder 23bit single-turn or multi-turn.



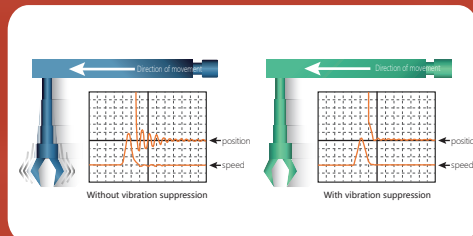
Load disturbance suppression

Observe the change of load disturbance in real time and adjust it quickly to enhance the anti disturbance ability of the servo system.



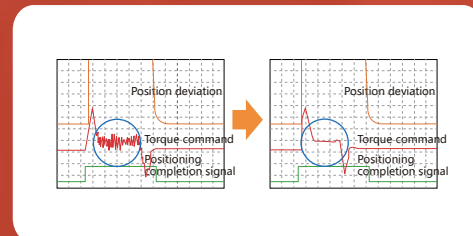
Friction compensation

The change of lubricant viscosity resistance caused by temperature fluctuation, the deviation of the device and the change of viscous friction and stable load caused by aging will reduce the system performance. The automatic adjustment function of friction compensation ensures the stability and reliability of the system.



Vibration suppression

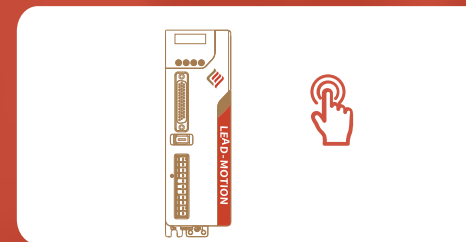
Suppress the low-frequency vibration (shaking) of about 1 ~ 100Hz caused by the vibration of machine, etc. during positioning.



Oscillation suppression

The oscillation suppression function can effectively suppress the continuous oscillation of about 100 ~ 1000Hz when increasing the control gain.

Easy to use



One key self-tuning

Thanks to self-optimization and resonance suppression function, the system can automatically adapt to mechanical load. Application engineer can complete the commissioning without indepth servo technology.

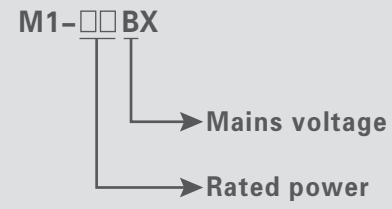


DriveKey

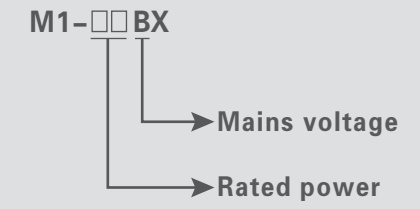
The debugging software DriveKey is concise ,easy to grasp and deeply analyze the motion waveform, which provides a new way for senior engineers to deeply fine tune, so that M1 servo system can be applied to complex and high-precision motion control system.



M1 SizeA



M1 SizeB



Technical Data

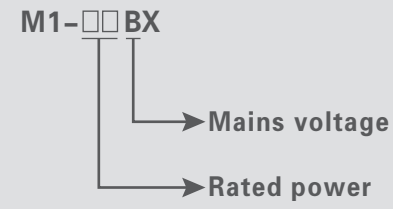
Type	M1-01BX	M1-02BX	M1-04BX	M1-08BX
Rated power	100W	200W	400W	750W
Rated current(effective)	1.1A	1.6A	2.8A	5.5A
Peak current(effective)	3.3A	5.8A	9.3A	16.9A
Mains voltage, Frequency	1×AC200~230V、50/60Hz			
Voltage range	±20%			
Overload capacity	200% , 10s ; Peak current , 3s		200% , 100s ; Peak current , 5s	
Cooling method	Self-cooling		Air-cooling	
Dimensions (D×H×W)	173mm×170mm×50mm			
Weight	1.05kg			
Integrated dynamic braking relay	Option			
Minimum ohmic resistance of an externally installed braking resistor	25Ω			
Control supply	From DC Link voltage			
In storage	-20°C~85°C			
In operation	0°C~55°C			
In storage	< 90% (Without condensation)			
In operation	< 90% (Without condensation)			
Protection	IP20			
Installation altitude	Up to 1000m above MSL, over 1000m above MSL with power reduction (1% per 100 m, max.2000 m above sea level)			
Vibration	< 4.9m/s ²			
Attack	< 19.6m/s ²			
Certification	CE authentication			

Technical Data

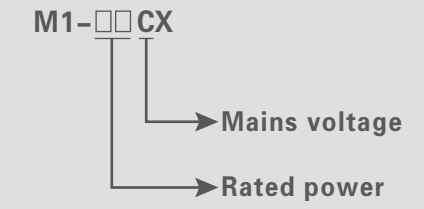
Type	M1-10BX	M1-15BX
Rated power	1.0kW	1.5kW
Rated current(effective)	7.6A	12A
Peak current(effective)	17.0A	28.0A
Mains voltage, Frequency	1/3×AC200~230V、50/60Hz	
Voltage range	±20%	
Overload capacity	200% , 100s ; Peak current , 3s	
Cooling method	Air-cooling	
Dimensions (D×H×W)	183mm×180mm×60mm	
Weight	1.46kg	
Integrated dynamic braking relay	No	
Minimum ohmic resistance of an externally installed braking resistor	12Ω	
Control supply	From DC Link voltage	
In storage	-20°C~85°C	
In operation	0°C~55°C	
In storage	< 90% (Without condensation)	
In operation	< 90% (Without condensation)	
Protection	IP20	
Installation altitude	Up to 1000m above MSL, over 1000m above MSL with power reduction (1% per 100 m, max.2000 m above sea level)	
Vibration	< 4.9m/s ²	
Attack	< 4.9m/s ²	
Certification	CE authentication	



M1 Sizec



M1 Sizec



Technical Data

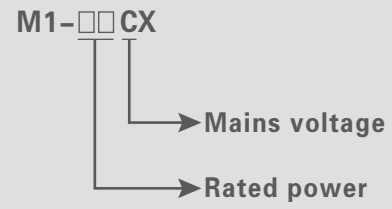
Type	M1-20BX	M1-30BX
Rated power	2.0kW	3.0kW
Rated current(effective)	18.5A	19.6A
Peak current(effective)	42.0A	56.0A
Mains voltage, Frequency	1/3×AC200 ~ 230V、50/60Hz	
Voltage range	±20%	
Overload capacity	200% , 100s ; Peak current , 3s	
Cooling method	Air-cooling	
Dimensions (D×H×W)	183mm×190mm×90mm	
Weight	≈3kg	
Integrated dynamic braking relay	No	
Minimum ohmic resistance of an externally installed braking resistor	10Ω	
Control supply	1×AC200 ~ 230V +10% ~ -15% 50/60Hz	
In storage	-20°C~85°C	
In operation	0°C~55°C	
In storage	< 90% (Without condensation)	
In operation	< 90% (Without condensation)	
Protection	IP20	
Installation altitude	Up to 1000m above MSL, over 1000m above MSL with power reduction (1% per 100 m, max.2000 m above sea level)	
Vibration	< 4.9m/s ²	
Attack	< 19.6m/s ²	
Certification	CE authentication	

Technical Data

Type	M1-30CX
Rated power	3.0kW
Rated current(effective)	12A
Peak current(effective)	28.0A
Mains voltage, Frequency	3×AC380 ~ 480V、50/60Hz
Voltage range	±20%
Overload capacity	200% , 100s ; Peak current , 3s
Cooling method	Air-cooling
Dimensions (D×H×W)	183mm×190mm×90mm
Weight	≈3kg
Integrated dynamic braking relay	No
Minimum ohmic resistance of an externally installed braking resistor	28Ω
Control supply	1×AC380 ~ 480V +10% ~ -15% 50/60Hz
In storage	-20°C~85°C
In operation	0°C~55°C
In storage	< 90% (Without condensation)
In operation	< 90% (Without condensation)
Protection	IP20
Installation altitude	Up to 1000m above MSL, over 1000m above MSL with power reduction (1% per 100 m, max.2000 m above sea level)
Vibration	< 4.9m/s ²
Attack	< 19.6m/s ²
Certification	CE authentication

M1 Series High Performance Servo System

M1 Series High Performance Servo System

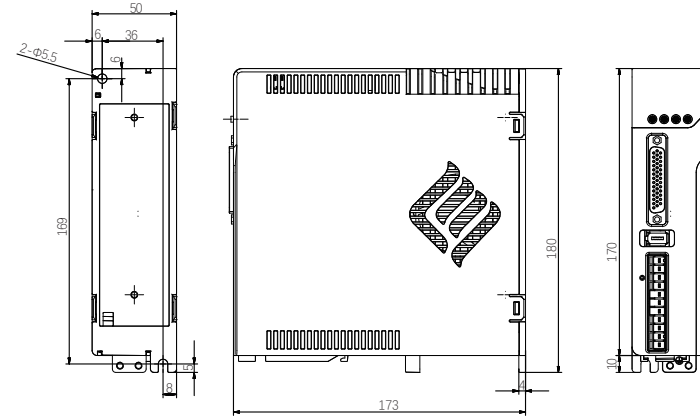


Technical Data

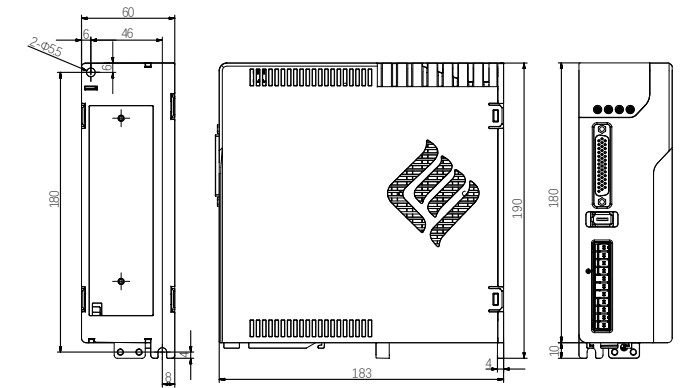
Type	M1-45CX	M1-55CX	M1-75CX
Rated power	4.5kW	5.5kW	7.5kW
Rated current(effective)	16.5A	21A	26A
Peak current(effective)	42.0A	55.0A	65.0A
Mains voltage, Frequency	3×AC380~480V、50/60Hz		
Voltage range	±20%		
Overload capacity	200% , 100s ; Peak current , 3s		
Cooling method	Air-cooling		
Dimensions (D×H×W)	230mm×250mm×90mm		
Weight	≈4.2kg		
Integrated dynamic braking relay	No		
Minimum ohmic resistance of an externally installed braking resistor	28Ω		
Control supply	1×AC380~480V +10%~-15% 50/60Hz		
In storage	-20°C~85°C		
In operation	0°C~55°C		
In storage	< 90% (Without condensation)		
In operation	< 90% (Without condensation)		
Protection	IP20		
Installation altitude	Up to 1000m above MSL, over 1000m above MSL with power reduction (1% per 100 m, max.2000 m above sea level)		
Vibration	< 4.9m/s ²		
Attack	< 19.6m/s ²		
Certification	CE authentication		

Dimensions Unit : mm

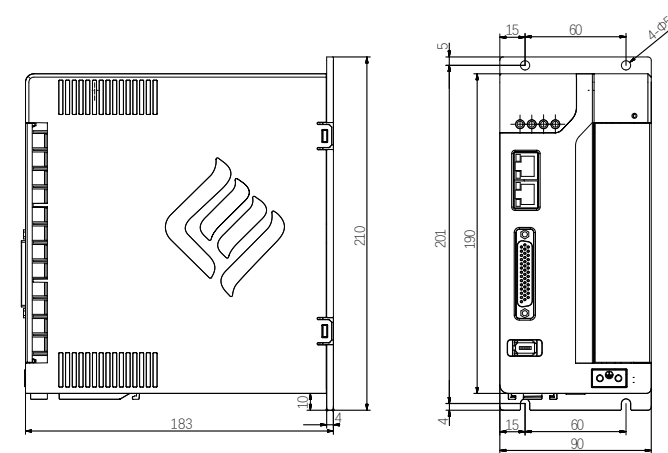
M1 SizeA 100W-750W



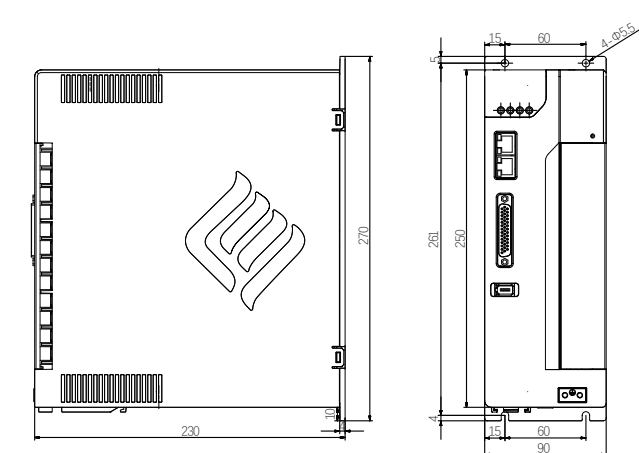
M1 SizeB 1.0kW-1.5kW



M1 SizeC 2.0kW-3.0kW



M1 SizeD 4.5kW-7.5kW



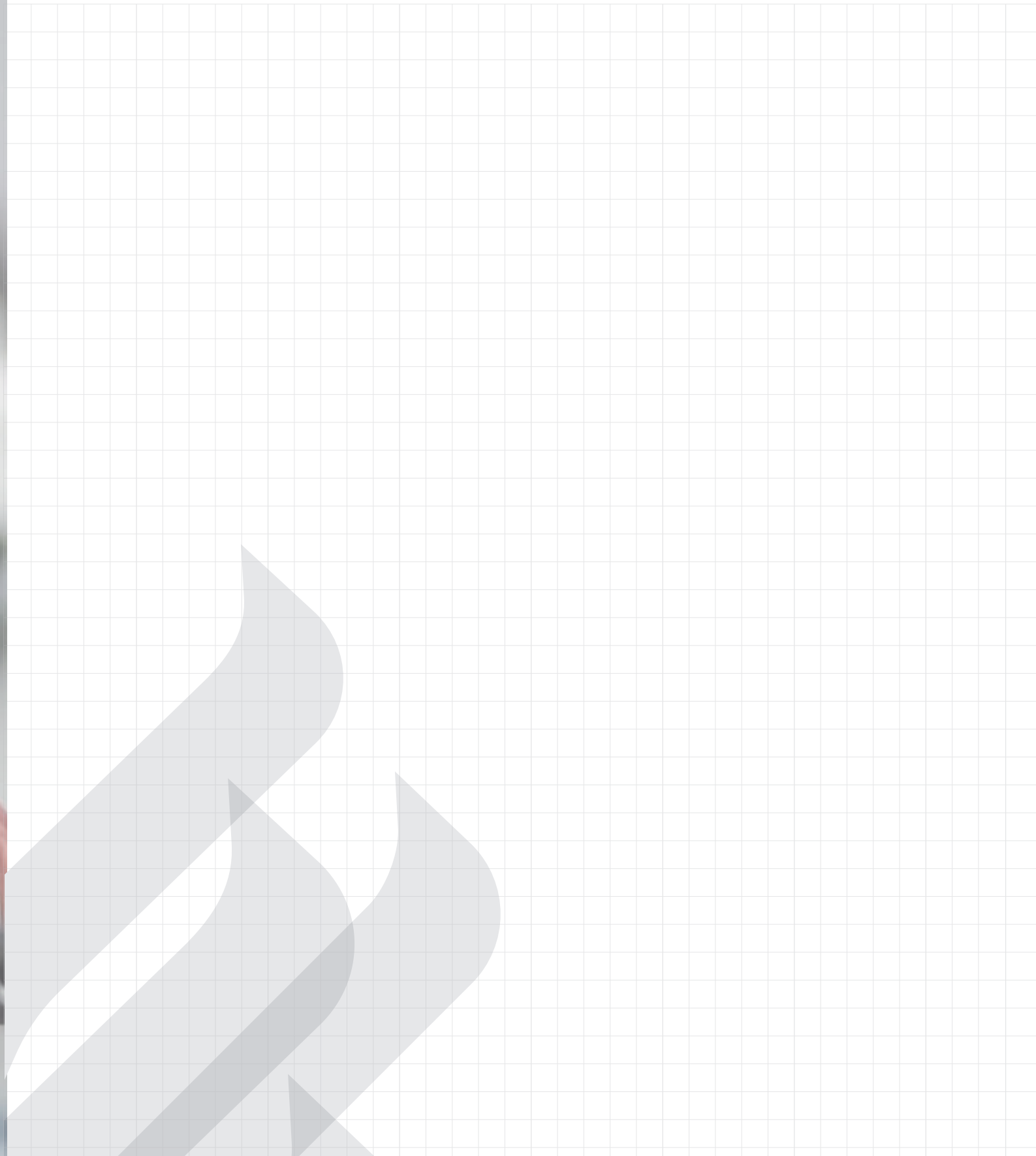


Intelligent industry creates wonderful life

Matching Accessories

Power	Type	Motor Type	Braking Resistor			Power cable		Encoder cable
			Internal	Minimum ohmic resistance of an externally installed braking resistor (Ω)	External braking resistor	Type	Cable cross-section	
100W	M1-01BX	LMZ-01B06030	/	25	RXLG-60W-26R-J	LMC-D08-0-Txx	4*0.5mm ²	LMC-E-0-Txx
200W	M1-02BX	LMZ-02B06030	/	25	RXLG-60W-26R-J	LMC-D08-0-Txx	4*0.5mm ²	LMC-E-0-Txx
400W	M1-04BX	LMZ-04B06030	/	25	RXLG-60W-26R-J	LMC-D08-0-Txx	4*0.5mm ²	LMC-E-0-Txx
750W	M1-08BX	LMZ-08B08030	40Ω/60W	25	RXLG-100W-26R-J	LMC-D08-0-Txx	4*0.5mm ²	LMC-E-0-Txx
		LMZ-10B08030	40Ω/60W	25	RXLG-100W-26R-J	LMC-D08-0-Txx	4*0.5mm ²	LMC-E-0-Txx
1kW	M1-10BX	LMG-09B13015	40Ω/60W	12	RXLG-100W-13R-J	LMC-D10-1-Txx	4*0.75mm ²	LMC-E-1-Txx
1.5kW	M1-15BX	LMG-13B13015	40Ω/60W	12	RXLG-150W-13R-J	LMC-D15-1-Txx	4*1.5mm ²	LMC-E-1-Txx
2kW	M1-20BX	LMG-18B13015	50Ω/100W	10	RXLG-200W-11R-J	LMC-D20-1-Txx	4*2.5mm ²	LMC-E-1-Txx
3kW	M1-30BX	LTG-29B18015	50Ω/100W	10	RXLG-300W-11R-J	LTC-D55-2-Txx	4*4mm ²	LTC-E-1-Txx
3kW	M1-30CX	LTG-29C18015	50Ω/100W	28	RXLG-300W-30R-J	LTC-D55-2-Txx	4*4mm ²	LTC-E-1-Txx
4.5kW	M1-45CX	LTG-44C18015	50Ω/150W	28	RXLG-500W-30R-J	LTC-D55-2-Txx	4*4mm ²	LTC-E-1-Txx
5.5kW	M1-55CX	LTG-55C18015	50Ω/150W	28	RXLG-600W-30R-J	LTC-D55-3-Txx	4*4mm ²	LTC-E-1-Txx
7.5kW	M1-75CX	LTG-75C18015	50Ω/150W	28	RXLG-800W-30R-J	LTC-D75-3-Txx	4*6mm ²	LTC-E-1-Txx

Note



LM, LT Series High Performance Servomotor

1

Compact

New technology, compact structure, short body and small volume.

2

Low cogging torque

New electromagnetic scheme design, low cogging torque and excellent performance.

3

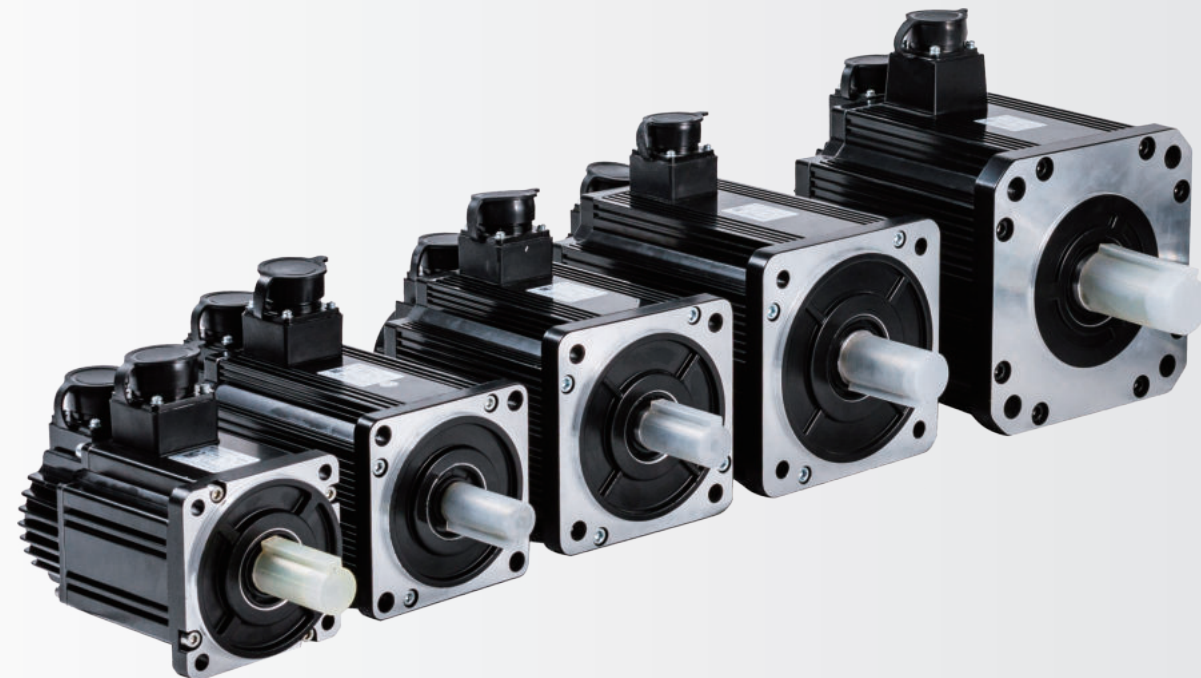
High precision

23/24bit encoder or magnetic encoder are easily to choose for meeting customer demands.

4

Lower temperature rise

New design, low loss and low temperature rise.



Order Code

LM Z-02 B 060 30 D 1 1-□

Motor Series

LM
LT

Inertia of the Motor

D-Low inertia
Z-Middle inertia
G-High inertia

Motor Power

A5	50W	13	1.3kW
01	100W	15	1.5kW
02	200W	18	1.8kW
04	400W	20	2.0kW
07	700W	26	2.6kW
08	750W	29	2.9kW
09	850W	44	4.4kW
10	1.0kW	55	5.5kW
12	1.2kW	75	7.5kW

Rated Voltage

B-220V
C-380V

Version Number

None-Default version
A-A Version
B-B Version

Accessories

0-None
1-With oil seal, No brake
2-With oil seal, With brake
3-No oil seal, With brake

Shaft key

1-With feather key
2-Straight, without key

Encoder

C-17bit incremental encoder
K-17bit absolute encoder
D-23bit incremental encoder
M-23bit absolute encoder

* Support multi-turn encoder by using battery with cable

Rated Speed

15-1500
20-2000
25-2500
30-3000

Flange Size

040-40mm
060-60mm
080-80mm
090-90mm
110-110mm
130-130mm
180-180mm

LM, LT Series High Performance Servomotor

LM, LT Series High Performance Servomotor



Technical Data

- Self-cooling, rated voltage 200~250VAC

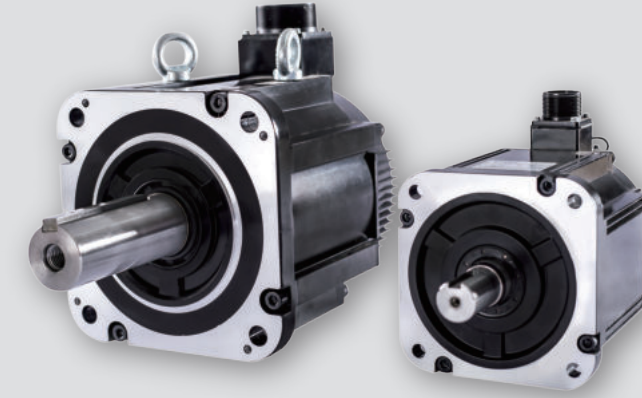
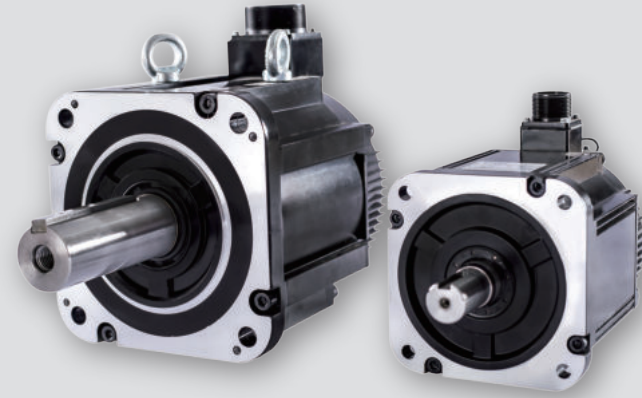
Motor type			LMZ-01B040 □40mm	LMZ-02B060 □60mm	LMZ-04B060 □60mm	LMZ-08B080 □80mm	LMZ-10B080 □80mm
Stall torque	M_0	Nm	0.350	0.704	1.364	2.629	3.630
Stall current	I_0	A	1.21	1.65	3.19	5.50	5.94
Rated data							
Rated power	P_N	kW	0.10	0.20	0.40	0.75	1.00
Rated speed	n_N	r/min	3000	3000	3000	3000	3000
Rated torque	M_N	Nm	0.32	0.64	1.27	2.39	3.18
Rated current	I_N	A	1.1	1.6	2.6	4.6	5.7
Rated frequency	f_N	Hz	250	250	250	250	250
Limit data							
Maximum speed	n_{Max}	r/min	6500	6500	6500	6000	5000
Peak torque	M_{Max}	Nm	1.11	2.54	5.08	8.35	9.52
Peak current	I_{Max}	A	4.4	6.4	10.9	17.2	17.1
Basic data							
Number of pole pairs			5	5	5	5	5
EMF constant	K_E	V/Krpm	18.8	26.9	34.1	33.5	36.2
Torque constant (20°C)	K_T	Nm/A	0.290	0.400	0.488	0.519	0.570
Winding resistor (20°C)	R_{p-p}	Ω	7.300	3.650	2.100	0.650	0.535
Winding inductance (20°C)	L_{p-p}	mH	7.75	7.35	4.90	3.40	3.45
Rotor moment of inertia (without brake)	J	kgcm ²	0.071	0.280	0.560	1.560	1.600
Rotor moment of inertia (with brake)	J_b	kgcm ²	0.079	0.310	0.590	1.630	1.630
Mass of the motor (without brake)	m	kg	0.40	0.78	1.20	2.10	2.83
Mass of the motor (with brake)	m_b	kg	0.64	1.20	1.67	2.90	3.50
Protection			IP65	IP65	IP65	IP65	IP65



Technical Data

- Self-cooling, rated voltage 200~250VAC

Motor type			LMG-09B130 □130mm	LMG-13B130 □130mm	LMG-18B130 □130mm
Stall torque	M_0	Nm	5.94	9.11	12.61
Stall current	I_0	A	6.82	9.90	14.52
Rated data					
Rated power	P_N	kW	0.85	1.3	1.8
Rated speed	n_N	r/min	1500	1500	1500
Rated torque	M_N	Nm	5.39	8.34	11.50
Rated current	I_N	A	6.9	10.7	16.7
Rated frequency	f_N	Hz	125	125	125
Limit data					
Maximum speed	n_{Max}	r/min	3000	3000	3000
Peak torque	M_{Max}	Nm	14.20	23.30	28.70
Peak current	I_{Max}	A	18.1	29.8	42.0
Basic data					
Number of pole pairs			5	5	5
EMF constant	K_E	V/Krpm	51.2	50.2	46.0
Torque constant (20°C)	K_T	Nm/A	0.78	0.78	0.690
Winding resistor (20°C)	R_{p-p}	Ω	0.465	0.265	0.160
Winding inductance (20°C)	L_{p-p}	mH	4.90	2.90	1.80
Rotor moment of inertia (without brake)	J	kgcm ²	13.9	19.8	26.0
Rotor moment of inertia (with brake)	J_b	kgcm ²	16.0	22.0	28.1
Mass of the motor (without brake)	m	kg	4.80	5.50	7.50
Mass of the motor (with brake)	m_b	kg	5.80	6.50	8.50
Protection			IP65	IP65	IP65



Technical Data

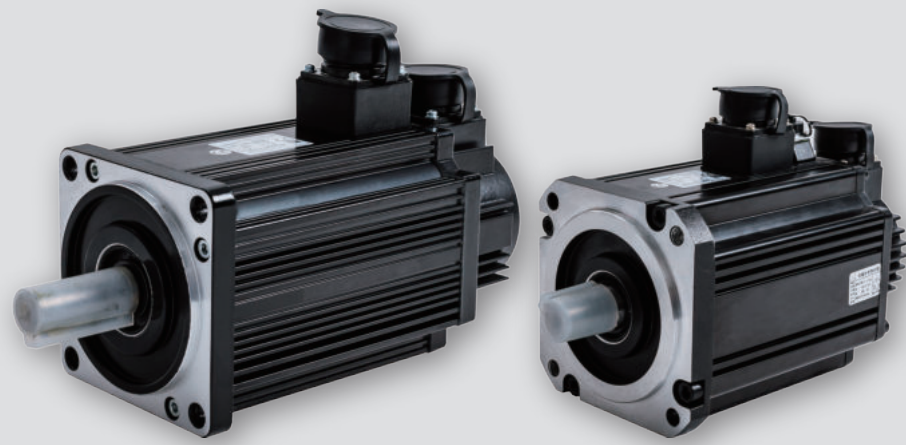
- Self-cooling, rated voltage 380~480VAC

Motor type			LTG-29C180 □180mm	LTG-44C180 □180mm	LTG-55C180 □180mm	LTG-75C180 □180mm
Stall torque	M ₀	Nm	22.1	34.1	42.0	57.6
Stall current	I ₀	A	12.5	18.6	24.0	32.8
Rated data						
Rated power	P _N	kW	2.9	4.4	5.5	7.5
Rated speed	n _N	r/min	1500	1500	1500	1500
Rated torque	M _N	Nm	18.6	28.4	35.0	48.0
Rated current	I _N	A	11.9	16.5	20.8	25.7
Rated frequency	f _N	Hz	125	125	125	125
Limit data						
Maximum speed	n _{max}	r/min	3000	3000	3000	3000
Peak torque	M _{max}	Nm	45.1	71.1	87.6	119.0
Peak current	I _{max}	A	28.0	40.5	52.0	65.0
Basic data						
Number of pole pairs			5	5	5	5
EMF constant	K _E	V/Krpm	102.8	116.8	108.9	116.2
Torque constant (20°C)	K _T	Nm/A	1.70	1.93	1.80	1.92
Winding resistor (20°C)	R _{p-p}	Ω	0.310	0.235	0.140	0.085
Winding inductance (20°C)	L _{p-p}	mH	4.265	3.475	2.260	1.725
Rotor moment of inertia (without brake)	J	kgcm ²	46.00	67.50	89.00	125.00
Rotor moment of inertia (with brake)	J _b	kgcm ²	54.5	75.4	97.5	134.0
Mass of the motor (without brake)	m	kg	13.00	17.50	22.00	29.50
Mass of the motor (with brake)	m _b	kg	19.50	24.00	27.80	35.00
Protection			IP65	IP65	IP65	IP65

Technical Data

- Self-cooling, rated voltage 200~250VAC

Motor type			LTG-29B180 □180mm
Stall torque	M ₀	Nm	20.46
Stall current	I ₀	A	26.18
Rated data			
Rated power	P _N	kW	2.9
Rated speed	n _N	r/min	1500
Rated torque	M _N	Nm	18.6
Rated current	I _N	A	23.8
Rated frequency	f _N	Hz	125
Limit data			
Maximum speed	n _{max}	r/min	3000
Peak torque	M _{max}	Nm	45.1
Peak current	I _{max}	A	56
Basic data			
Number of pole pairs			5
EMF constant	K _E	V/Krpm	29.62
Torque constant (20°C)	K _T	Nm/A	0.848
Winding resistor (20°C)	R _{p-p}	Ω	0.08
Winding inductance (20°C)	L _{p-p}	mH	1
Rotor moment of inertia (without brake)	J	kgcm ²	46
Rotor moment of inertia (with brake)	J _b	kgcm ²	53.9
Mass of the motor (without brake)	m	kg	13
Mass of the motor (with brake)	m _b	kg	19.5
Protection			IP65



Technical Data

- Self-cooling, rated voltage 200~250VAC

Motor type			LMZ-08B090 □90mm	LMZ-07B090 □90mm	LMZ-10B090 □90mm	LMZ-12B110 □110mm	LMZ-15B110 □110mm	LMZ-18B110 □110mm
Stall torque	M_0	Nm	2.7	3.7	4.8	4.8	5.7	6.9
Stall current	I_0	A	3.3	3.2	4.8	6.0	6.8	6.9
Rated data								
Rated power	P_N	kW	0.75	0.73	1.00	1.20	1.50	1.80
Rated speed	n_N	r/min	3000	2000	2500	3000	3000	3000
Rated torque	M_N	Nm	2.39	3.50	4.00	4.00	5.00	6.00
Rated current	I_N	A	3.0	3.0	4.0	5.0	6.0	7.0
Rated frequency	f_N	Hz	200	133	166	200	200	200
Limit data								
Maximum speed	n_{Max}	r/min	3500	2500	3000	3500	3500	3500
Peak torque	M_{Max}	Nm	7.2	10.5	12.0	12.0	15.0	18.0
Peak current	I_{Max}	A	9	9	12	15	18	21
Basic data								
Number of pole pairs			4	4	4	4	4	4
EMF constant (20°C)	K_E	V/Krpm	51.5	71.0	64.5	56.5	58.0	56.5
Torque constant (20°C)	K_T	Nm/A	0.80	1.17	1.00	0.80	0.80	0.90
Winding resistor (20°C)	R_{P-P}	Ω	1.025	1.225	0.995	0.740	0.500	0.400
Winding inductance (20°C)	L_{P-P}	mH	6.625	9.335	6.875	3.450	2.500	1.950
Rotor moment of inertia (without brake)	J	kgcm ²	2.62	3.20	3.57	7.30	9.20	10.80
Rotor moment of inertia (with brake)	J_b	kgcm ²	2.800	3.535	3.835	7.900	10.000	12.000
Mass of the motor (without brake)	m	kg	3.10	3.90	4.20	5.20	6.05	6.65
Mass of the motor (with brake)	m_b	kg	3.6	4.4	4.7	5.7	7.8	8.9
Protection			IP65	IP65	IP65	IP65	IP65	IP65

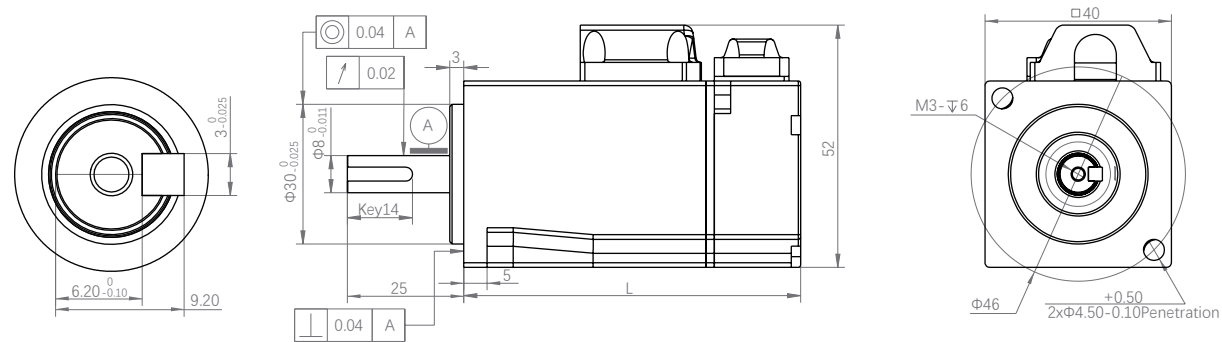
Technical Data

- Self-cooling, rated voltage 200~250VAC

Motor type			LMZ-10B130 □130mm	LMZ-13B130 □130mm	LMZ-15B130 □130mm	LMZ-20B130 □130mm	LMZ-26B130 □130mm	LMZ-38B130 □130mm
Stall torque	M_0	Nm	4.8	5.6	6.9	8.1	11.0	16.0
Stall current	I_0	A	4.8	5.6	6.9	7.8	11.0	16.0
Rated data								
Rated power	P_N	kW	1.0	1.3	1.5	2.0	2.6	3.8
Rated speed	n_N	r/min	2500	2500	2500	2500	2500	2500
Rated torque	M_N	Nm	4.0	5.0	6.0	7.7	10.0	15.0
Rated current	I_N	A	4.0	5.0	6.0	7.5	10.0	13.5
Rated frequency	f_N	Hz	166	166	166	166	166	166
Limit data								
Maximum speed	n_{Max}	r/min	3000	3000	3000	3000	3000	3000
Peak torque	M_{Max}	Nm	10	12.5	15	19.2	18	23
Peak current	I_{Max}	A	10.0	12.5	15.0	18.7	18.0	20.7
Basic data								
Number of pole pairs			4	4	4	4	4	4
EMF constant (20°C)	K_E	V/Krpm	67	65	65	68	67	70
Torque constant (20°C)	K_T	Nm/A	1.00	1.00	1.00	1.03	1.00	1.11
Winding resistor (20°C)	R_{P-P}	Ω	1.00	0.80	0.65	0.60	0.40	0.30
Winding inductance (20°C)	L_{P-P}	mH	4.75	4.00	3.10	2.90	1.80	1.50
Rotor moment of inertia (without brake)	J	kgcm ²	9.6	10.7	12.9	14.1	18.8	25.5
Rotor moment of inertia (with brake)	J_b	kgcm ²	10.50	11.50	13.92	15.80	21.00	30.00
Mass of the motor (without brake)	m	kg	5.5	5.8	6.6	7.1	8.5	10.1
Mass of the motor (with brake)	m_b	kg	6.5	6.7	7.5	8.5	10.2	12.5
Protection			IP65	IP65	IP65	IP65	IP65	IP65

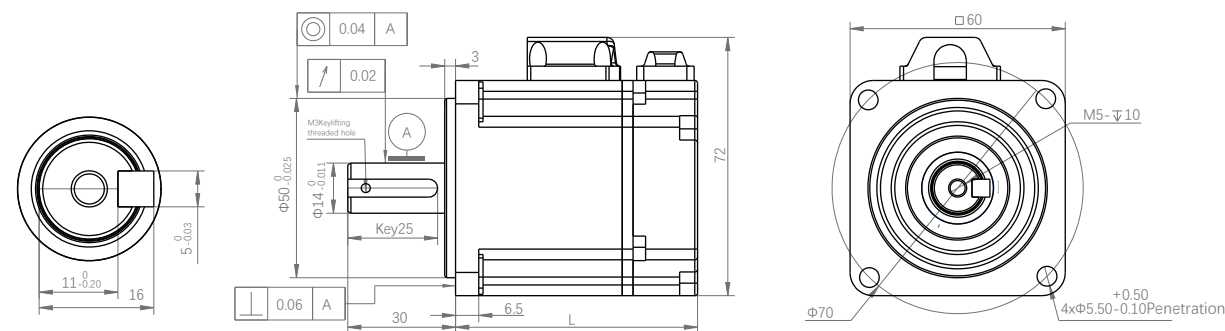
Dimensions Unit : mm

• LMZ-XXB040



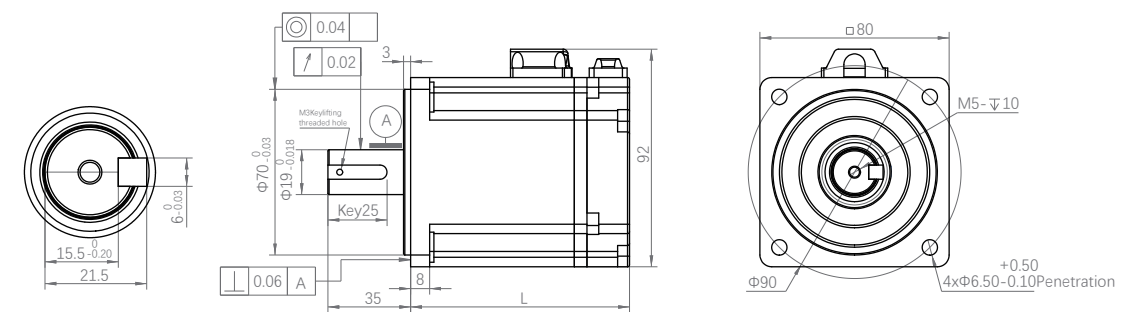
Motor type	Motor length (without brake)	Motor length (with brake)
LMD-01B040	72.3	103.0

• LMZ-XXB060



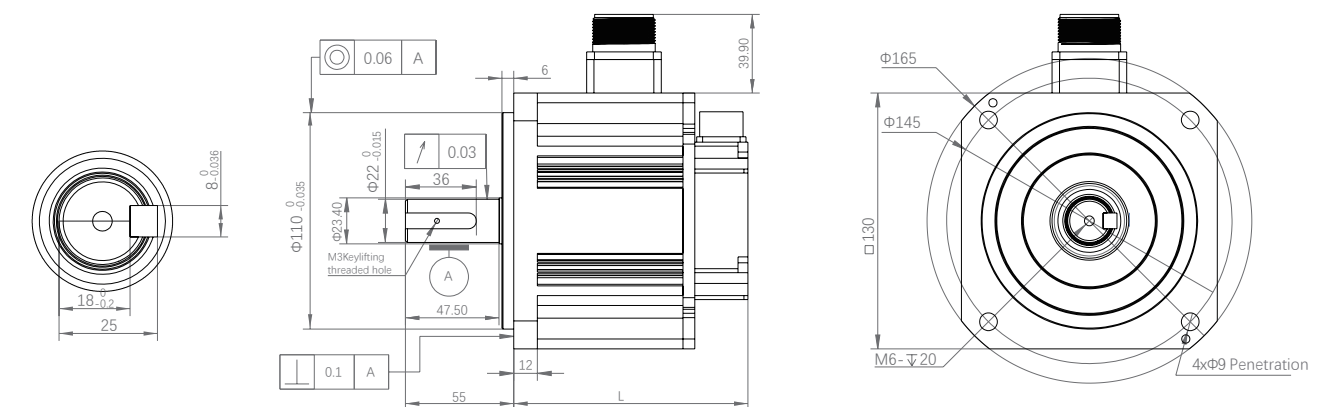
Motor type	Motor length (without brake)	Motor length (with brake)
LMZ-02B060	67.5	98
LMZ-04B060	85.5	116

• LMZ-XXB080



Motor type	Motor length (without brake)	Motor length (with brake)
LMZ-08B080	92.5	127.0
LMZ-10B080	126	155

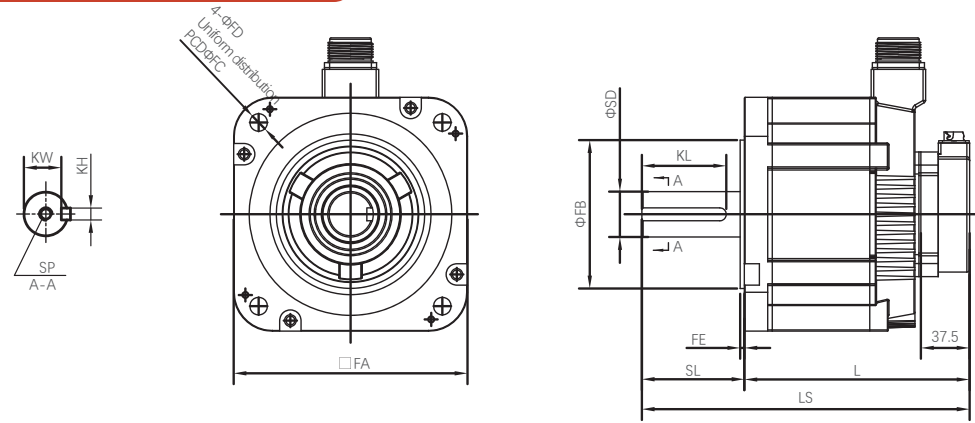
• LMG-XXB13015



Motor type	Motor length (without brake)	Motor length (with brake)
LMG-09B130	119	149
LMG-13B130	127	155
LMG-18B130	133	163

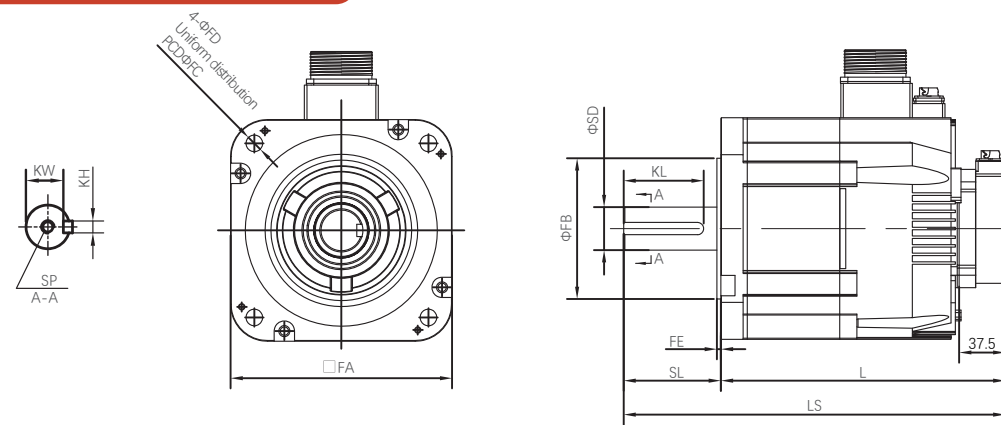
Dimensions Unit : mm

• **LTG-XXC(B)180 without brake**



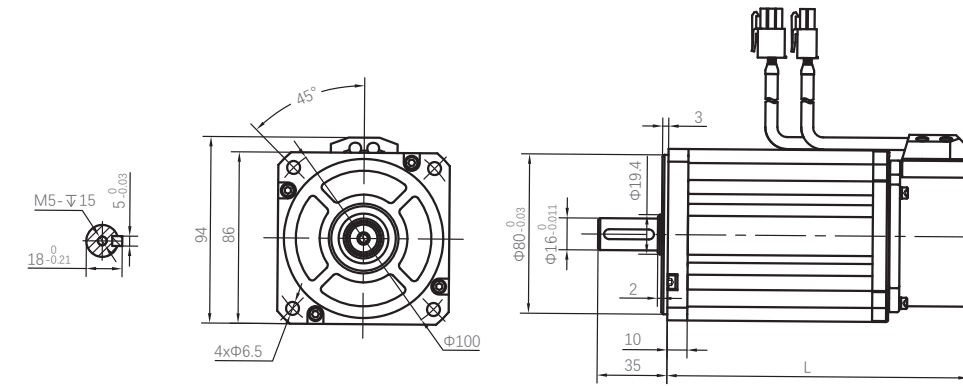
Motor type	LS	L	Flange					Axis			Shaft key		
			FA	FB	FC	FD	FE	SD	SL	SP	KL	KW	KH
LTG-29C(B)180	252.3	173.3	180	114.3	200	13.5	3.2	35	79	M12D25	65	30	10
LTG-44C180	276.3	197.3	180	114.3	200	13.5	3.2	35	79	M12D25	65	30	10
LTG-55C180	349.3	236.3	180	114.3	200	13.5	3.2	42	113	M16D32	96	37	12
LTG-75C180	395.3	282.3	180	114.3	200	13.5	3.2	42	113	M16D32	96	37	12

• **LTG-XXC(B)180 with brake**



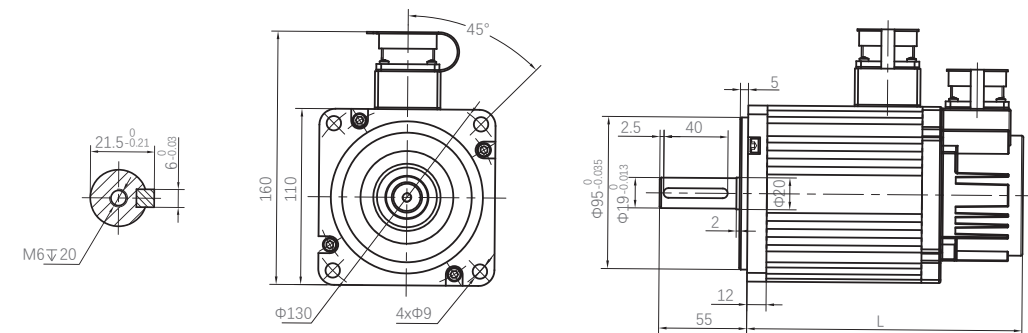
Motor type	LS	L	Flange					Axis			Shaft key		
			FA	FB	FC	FD	FE	SD	SL	SP	KL	KW	KH
LTG-29C(B)180	310	231	180	114.3	200	13.5	3.2	35	79	M12D25	65	30	10
LTG-44C180	334	255	180	114.3	200	13.5	3.2	35	79	M12D25	65	30	10
LTG-55C180	391	278	180	114.3	200	13.5	3.2	42	113	M16D32	96	37	12
LTG-75C180	437	324	180	114.3	200	13.5	3.2	42	113	M16D32	96	37	12

• **LMZ-XXB090**



Motor type	Motor length (without brake)	Motor length (with brake)
LMZ-08B090	150	198
LMZ-07B090	172	220
LMZ-10B090	182	230

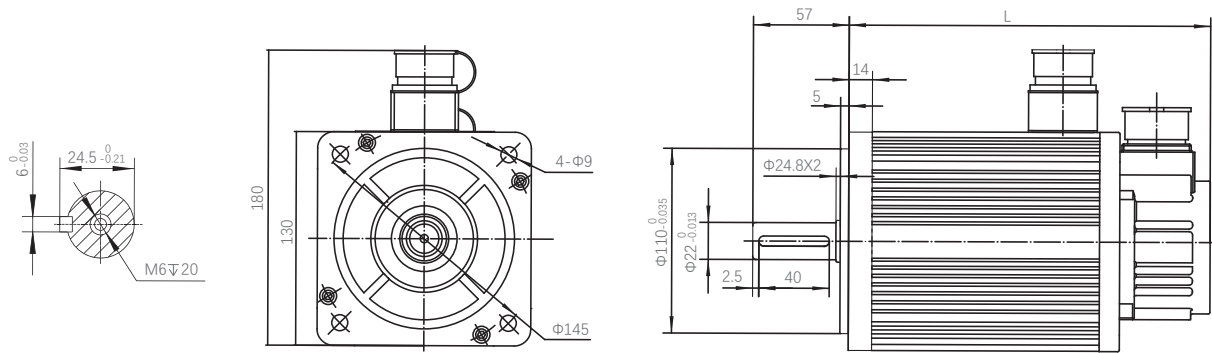
• **LMZ-XXB110**



Motor type	Motor length (without brake)	Motor length (with brake)
LMZ-12B110	159	233
LMZ-15B110	189	263
LMZ-18B110	189	263

Dimensions Unit : mm

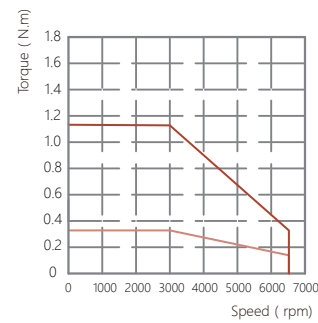
• LMZ-XXB13025



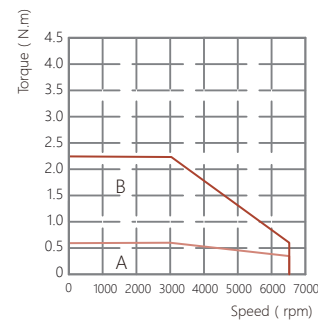
Motor type	Motor length (without brake)	Motor length (with brake)
LMZ-10B130	166	224
LMZ-13B130	171	224
LMZ-15B130	179	224
LMZ-20B130	192	229
LMZ-25B130	209	265
LMZ-38B130	231	282

Characteristics

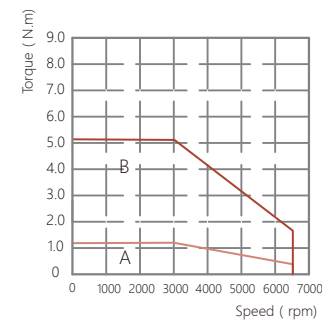
LMZ-01B040 Characteristics



LMZ-02B060 Characteristics

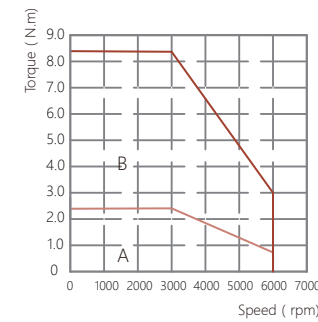


LMZ-04B060 Characteristics

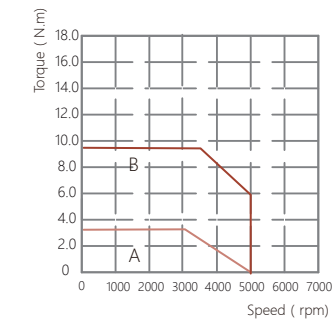


Characteristics

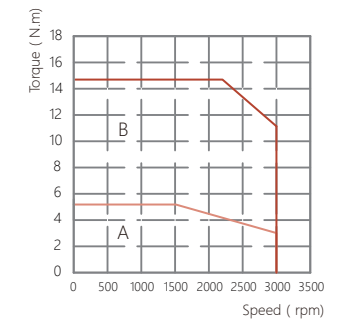
LMZ-08B080 Characteristics



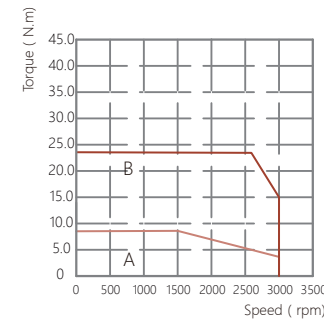
LMZ-10B080 Characteristics



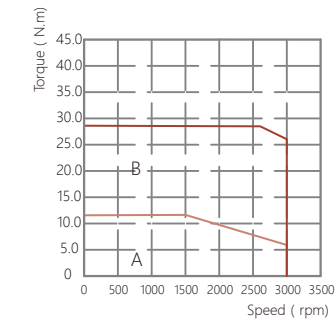
LMG-09B130 Characteristics



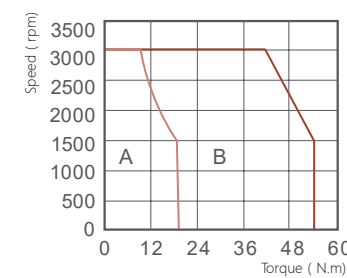
LMG-13B130 Characteristics



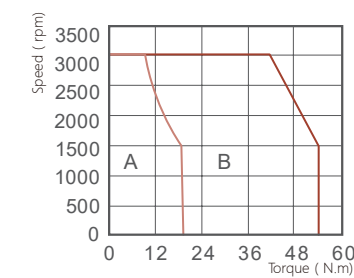
LMG-18B130 Characteristics



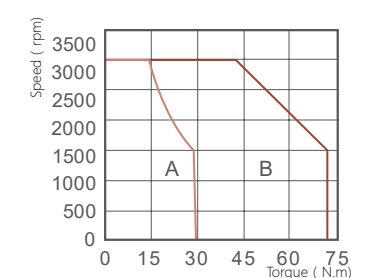
LTG-29B180 Characteristics



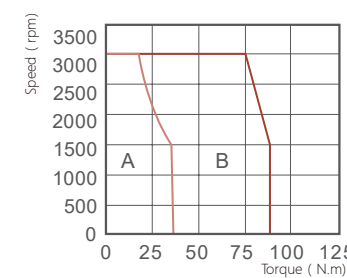
LTG-29C180 Characteristics



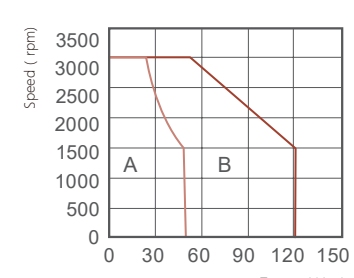
LTG-44C180 Characteristics



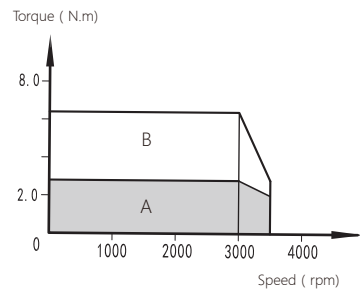
LTG-55C180 Characteristics



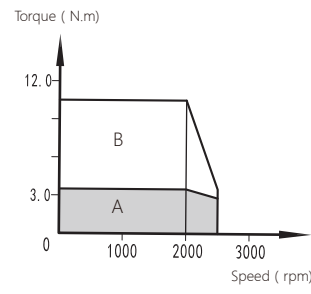
LTG-75C180 Characteristics



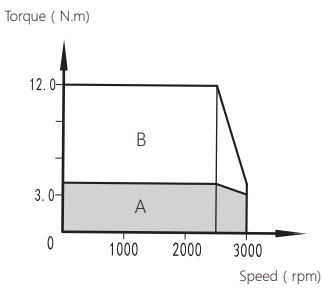
LMZ-08B090 Characteristics



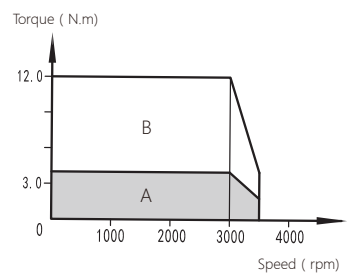
LMZ-07B090 Characteristics



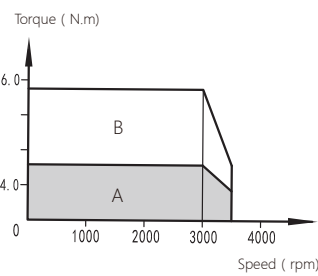
LMZ-10B090 Characteristics



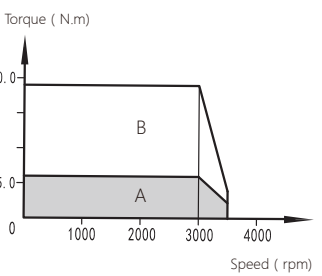
LMZ-12B110 Characteristics



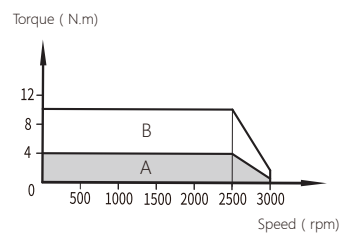
LMZ-15B110 Characteristics



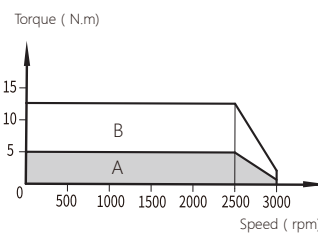
LMZ-18B110 Characteristics



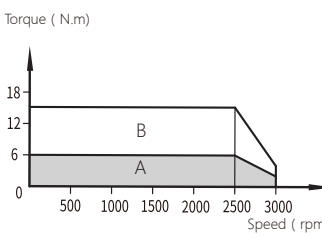
LMZ-10B130 Characteristics



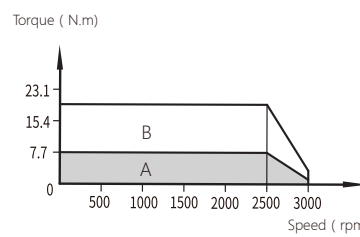
LMZ-13B130 Characteristics



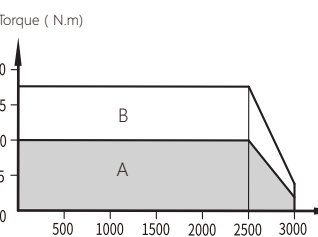
LMZ-15B130 Characteristics



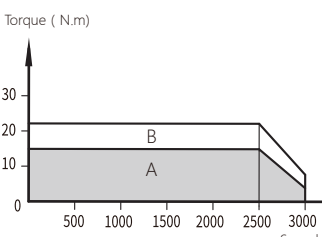
LMZ-20B130 Characteristics



LMZ-26B130 Characteristics



LMZ-38B130 Characteristics



Order Code

LMC-D08-0-T03-□

Series

LMC
LTC

Version Number

None-Default version
A-A Version
B-B Version

Signal Type

D - Standard power cable
B - Power cable with brake

Cable Length

03 - 3m
05 - 5m
X-customized

Cable Application

F - Fixed
T - Flexible

Cable specification

D/B	08-Within 750W
	10-850W-1kW
	15-1.2kW-1.5kW
	20-1.8kW-2kW
	55-2.9kW-5.5kW
	75-7.5kW

(For power cables only)

Motor Connector

0 - AMP connector
1 - Aviation plug
9 - Aviation connector

LMC-E-0-T03-□-□

Series

LMC
LTC

Encoder

None-Default incremental
M-Absolute

Signal Type

E - Encoder

Version Number

None-Default version
A-A Version
B-B Version

Cable Length

03 - 3m
05 - 5m
X - customized

Cable Application

F - Fixed
T - Flexible

Motor Connector

0 - AMP connector
1 - Aviation plug
9 - Aviation connector



Drive the future precisely